


Table Lamp

INSTRUCTION MANUAL

Safety Warnings

- This product is only suitable for connection to a 240V~50Hz supply in accordance with current IEE Wiring Regulations. It is for indoor use only, and not suitable for a bathroom location.
- This fitting is a Class II, Double Insulated product  and does not require an Earth. Live or Neutral **must not** be connected to Earth.
- Under no circumstances must this table lamp be covered with any material as this could pose a safety hazard. It must be used on a stable, flat surface. Do not plug into the mains until your lamp is fully assembled.
- This product is not suitable for persons under 14 years of age.
- Never fit bulbs of a higher wattage than those specified on the label as these may damage the fitting.
- This product contains delicate parts – be careful during handling and maintenance to avoid breakage.
- If the mains cable becomes damaged it must only be replaced by a technically competent, qualified person.
- If you are in any doubt about your competence please consult a qualified electrician.
- If any modification is made it will invalidate the warranty and may render the product unsafe.

Care Information

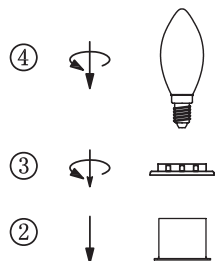
Allow 10 minutes to cool before adjusting or cleaning.
Clean with a dry cloth only. Do not use liquid or abrasive cleaners on this product.

Assembly/ User Instructions

Before you start

Please read these instructions carefully before fitting and retain for reference. Check the packaging and make sure that you have all the required parts. Follow each assembly step in order to prevent incorrect assembly. Ensure that the product is fully assembled as illustrated before use.

These assembly diagrams are intended as a guide – if in doubt consult a qualified electrician.



1. Carefully unpack your lamp, and place on a stable, flat surface.
2. Place the shade (1) over the lampholder, followed by the spacer (2) and secure with the shade ring (3).
3. Install the bulb. Do not install a bulb with a greater wattage or different shape than specified on the label.
4. Plug in, and touch the base to turn your lamp on. Touch again to make the lamp brighter, brightest and then off.

If your lamp will not illuminate, please check the bulb, the 3 amp fuse in the plug and ultimately check the relevant fuse in your fuse box. If unsuccessful please consult your retailer.

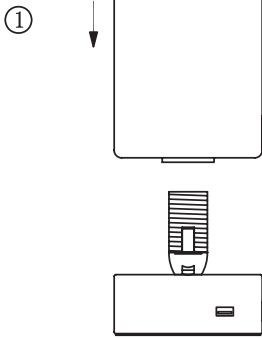
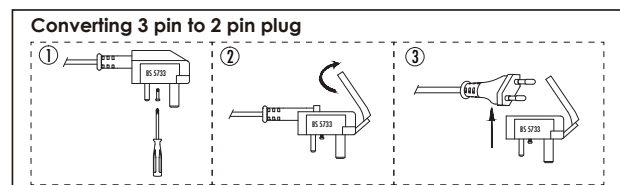
USB Charging Information

This product includes a USB port on the base with an output of 2100mA. It can be used to charge a variety of mobile devices via a suitable USB cable.

It may take a few minutes to start charging if your device is completely discharged. Your device may display a notification to confirm when charging has begun. The charging time will vary depending on your device's current charge level, capacity, age and temperature in the surrounding environment.

Charging can cause devices to warm up; this is common and your device will gradually return to its normal operating temperature once disconnected.

To use this item in Europe, the 3 pin adaptor can be removed by loosening the central screw and removing the adaptor to reveal the 2 pin Europe plug.



- EN Scan QR code for multi-language
- FR Scannez le code QR pour plusieurs langues
- ES Escanee el código QR para varios idiomas
- PL Zeskanuj kod QR dla wielu języków
- DE Scannen Sie den QR-Code nach mehreren Sprachen
- IT Scansiona il codice QR per multilingua