


Floor Light

INSTRUCTION MANUAL

Safety Warnings

- This product is only suitable for connection to a 240V~50Hz supply. It is for indoor use only, and not suitable for a bathroom location.
- This fitting is a Class II, Double Insulated product  and does not require an Earth. Live or Neutral **must not** be connected to Earth.
- Do not plug into the mains until your lamp is fully assembled. It must be used on a stable, flat surface.
- Under no circumstances must this table lamp be covered with any material as this could pose a safety hazard. This product is not suitable for persons under 14 years of age.
- Never fit bulbs of a higher wattage than those specified on the label as these may damage the fitting.
- Allow 10 minutes to cool before replacing, adjusting or cleaning.
- Clean with a dry cloth only. Do not use liquid or abrasive cleaners on this product.
- The lamp must be protected by a 3 amp fuse in the mains plug.
- If the mains cable becomes damaged it must only be replaced by a technically competent, qualified person.
- If you are in any doubt about your competence please consult a qualified electrician.
- This product may contain delicate parts – be careful during handling and maintenance to avoid breakage.
- If any modification is made, it will invalidate the warranty and may render the product unsafe.

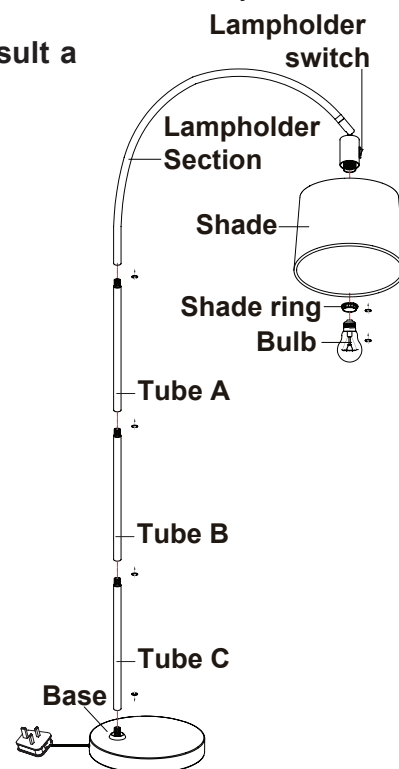
Assembly/ User Instructions

Before you start

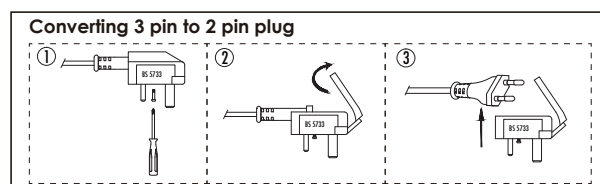
Please read these instructions carefully before fitting and retain for reference. Check the packaging and make sure that you have all the required parts. Follow each assembly step in order to prevent incorrect assembly. Ensure that the product is fully assembled as illustrated before use.

These assembly diagrams are intended as a guide – if in doubt consult a qualified electrician.

1. Do not attempt to plug in or use this product until it has been fully assembled. Disconnect from mains during assembly or maintenance.
2. Carefully remove all packaging from the base section, central tubes and lampholder and place on a stable, flat surface.
3. Screw the tube A onto the lampholder section in a clockwise direction. Take care not to trap the cable or cross the thread. Then screw Tube B on to Tube A and Tube C onto Tube B in the same way.
4. Gently pull any excess cable through from under the base and then out through the side of the base. Turn the completed assembly anticlockwise approximately 6 times (Turning the tubes anticlockwise first ensures that the cable will straighten when the tubes are fully assembled). Screw the assembly in a clockwise direction on to the base. Take care not to trap the cable or cross the threads, firmly tighten the tube by hand.
5. Stand the product upright and check the tightness of the joints by hand.
6. Remove the wrapping from the shade and attach the shade to the lamp by removing the shade ring from the lampholder. Place the shade over the lampholder and refit the shade ring. Tighten to secure the shade in place.
7. Install the bulb. Do not install a bulb with a greater wattage or different shape than specified on the label.
8. Plug in, and operate the lampholder switch to turn your lamp on.



If your lamp will not illuminate, please check the bulb, the 3 amp fuse in the plug and ultimately check the relevant fuse in your fuse box. If unsuccessful please consult your retailer.



To use this item in Europe, the 3 pin adaptor can be removed by loosening the central screw and removing the adaptor to reveal the 2 pin Europe plug.



- EN Scan QR code for multi-language
- FR Scannez le code QR pour plusieurs langues
- ES Escanee el código QR para varios idiomas
- PL Zeskanuj kod QR dla wielu języków
- DE Scannen Sie den QR-Code nach mehreren Sprachen
- IT Scansiona il codice QR per multilingua